

# South East area LAC

# Parks and Countryside Service

Land area managed 3,934 Hectares

## Sites of varying types managed across the city

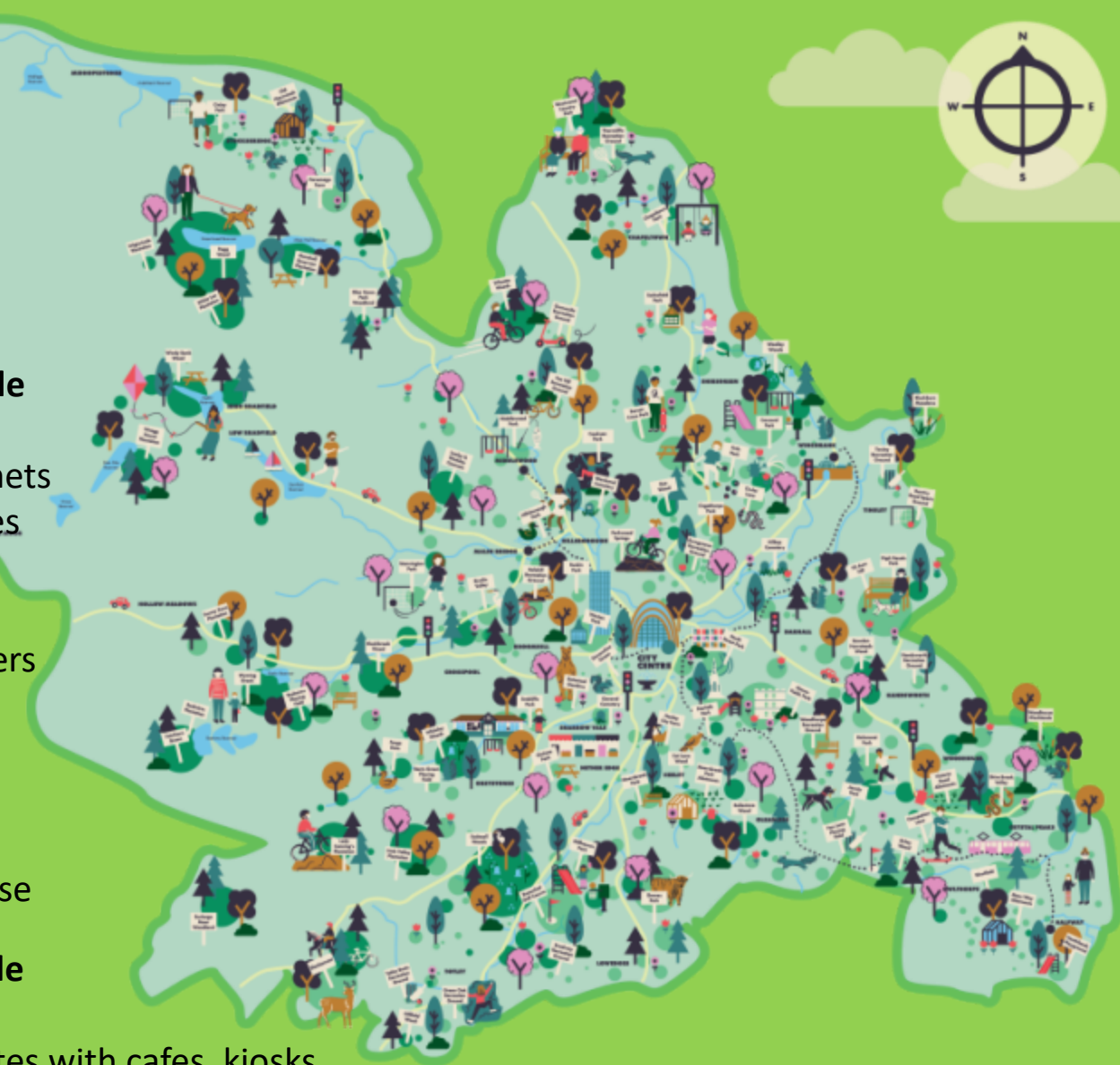
- City Parks – 13
- District Parks – 20
- Local Parks – 50
- Botanical Gardens – 1
- Local Green Spaces – 342
- Playgrounds – 150
- Nature Conservation Sites – 262
- Woodlands / plantations – 181
- Community Farms
- Allotment Sites – 76
- Closed Burial Grounds – 21

## Sports facilities include

- 15 cricket squares
- 4 cricket practice nets
- 140 football pitches
- 48 MUGAs
- 55 tennis courts
- 12 climbing boulders
- 21 bike tracks
- 11 skate parks
- 32 Bowls greens
- 14 Fishing sites
- 1 Pitch n Putt course

## Other facilities include

- Boating facility
- By May2023, 14 sites with cafes, kiosks & toilets and more are planned.
- 3 Visitor & Education Centres
- 722 dual waste bins, 144 dog bins



# Budget

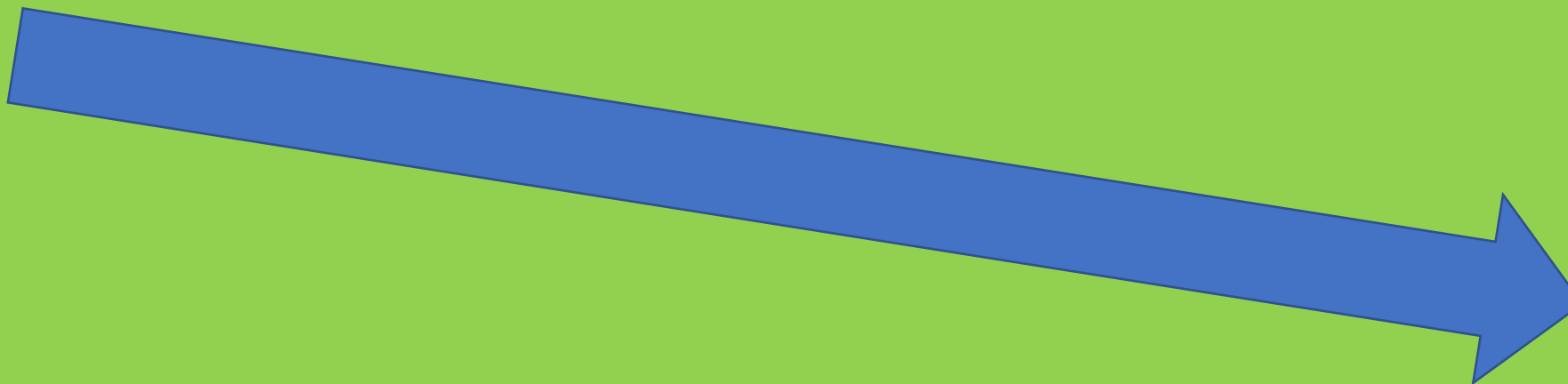
Revenue Funding

2010/11  
£8.5m

2018/19  
£4.9m

2022/23  
£ 3.75m

2023/24  
£3.35m



Income  
Generation

£5.96m

£7.22m



## The affordable management challenge

ASB, floral expectations, facilities management, popularity, diseases (e.g. Ash Die Back), staff & machinery, costly operations, fly tipping)



# South East LAC Area Quality & Quality uplift

## Sheffield Standard Scores - South East LAC

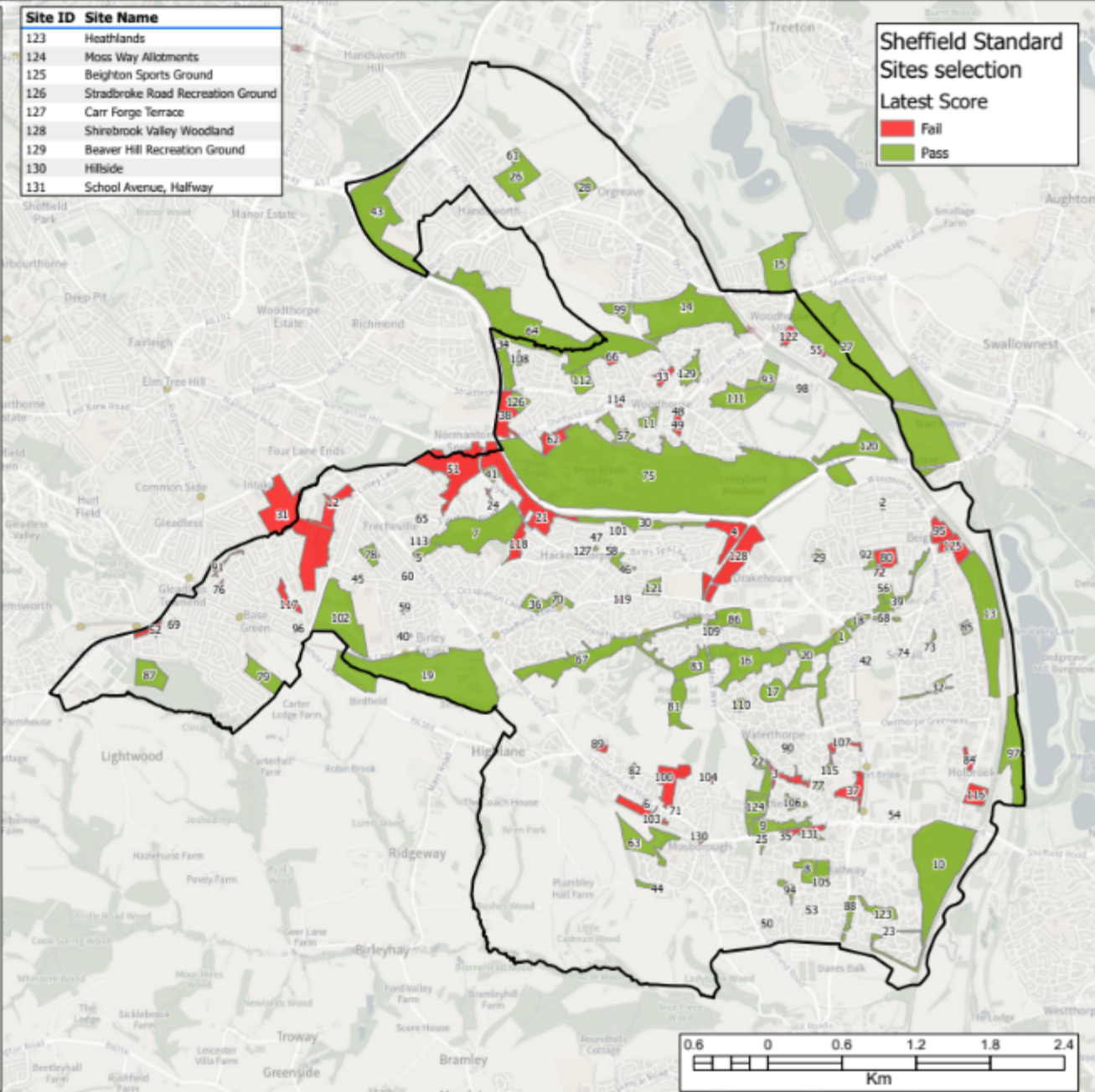
### Quality position

- 126 recreational sites
- 67.7% attain the Sheffield Standard
- Green Flag???

### Parks with plans for capital improvement:

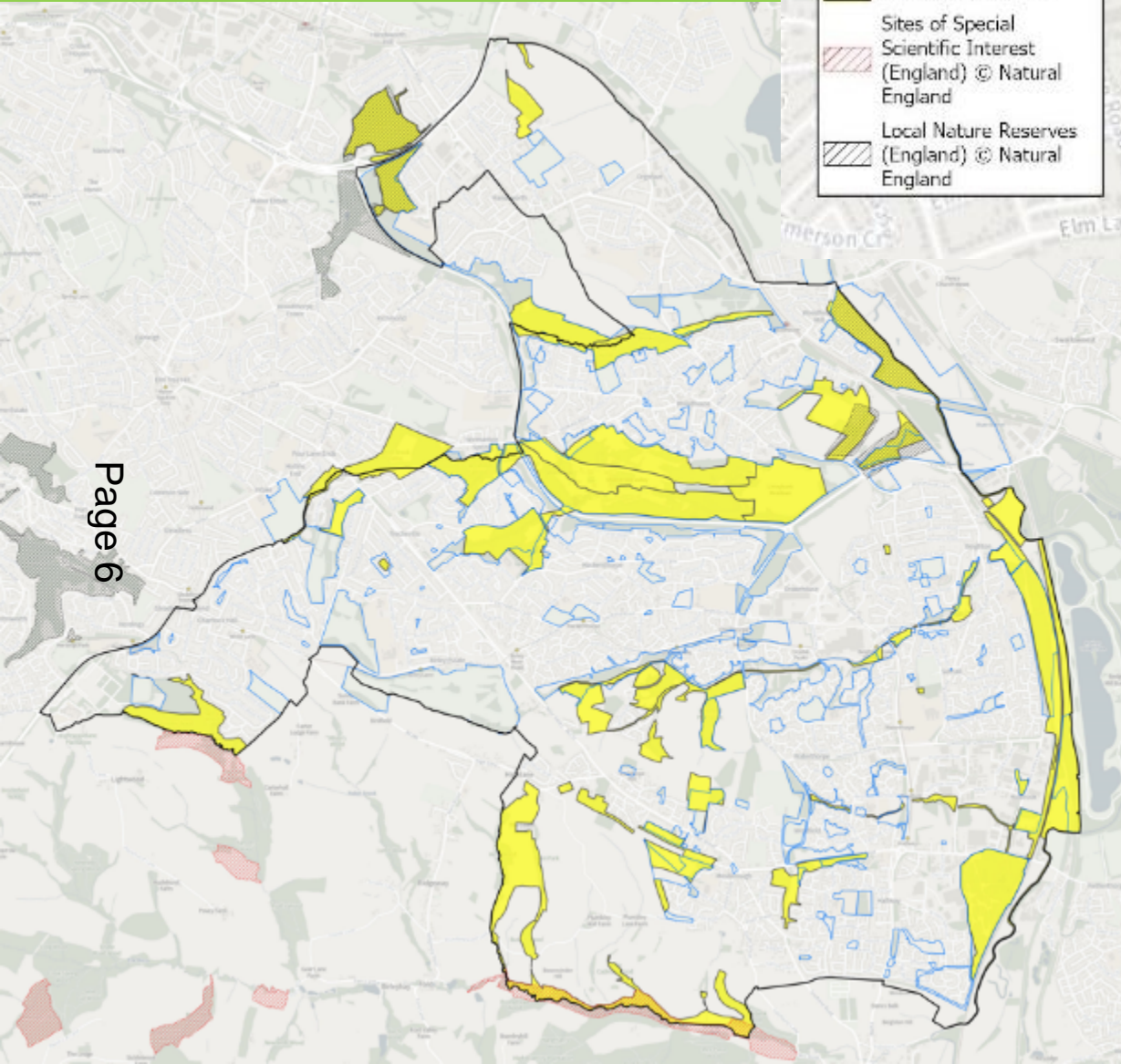
- Birley Spa (SCCT)
- Frecheville Pond
- Thorpe Green
- Owlthorpe Park
- Heathlands Park
- Handsworth Rec
- Shirebrook Valley (Species Recovery Bid)

Site ID	Site Name	Site ID	Site Name	Site ID	Site Name
1	Crystal Peaks Meadow	62	Victoria Road Allotments	123	Heathlands
2	Cairns Road	63	Bride Stile	124	Moss Way Allotments
3	Cowley Gardens	64	Shirtcliffe Brook	125	Beighton Sports Ground
4	Delves Avenue	65	Silkstone Place	126	Stradbroke Road Recreation Ground
5	East Glade Way	66	Mauncer Drive Pigeon Allotments	127	Carr Forge Terrace
6	Mosborough Moor Open Space	67	Ochre Dyke Owlthorpe	128	Shirebrook Valley Woodland
7	Silkstone Ravine	68	West Street Open Space	129	Beaver Hill Recreation Ground
8	Halfway Junior School	69	Briarfield Crescent	130	Hilside
9	Station Road, Westfield	70	Sheffield Road	131	School Avenue, Halfway
10	Holbrook Heath	71	Ferncroft Avenue Allotments		
11	Tannery Park	72	Sothall Green Allotments		
12	Frecheville Heath	73	Grizedale Avenue		
13	Meadowgate Avenue	74	Armstead Road		
14	Flockton Park	75	Shirebrook Valley Nature Reserve		
15	Woodhouse Mill Playing Field	76	Carson Mount		
16	Waterthorpe Park	77	Shortbrook Road		
17	Thorpe Green	78	Frecheville Pond		
18	Drake House Lane	79	Charnock Park		
19	Birley Golf Course	80	Reignhead Farm		
20	Waterthorpe Open Space	81	Westfield Plantation		
21	Scowerdons Drive	82	Owlthorpe Grove		
22	Moss Way Open Space	83	Lundwood Open Space		
23	Oxclose buffer	84	Cow Lane		
24	Spa Brook Drive	85	Beighton Cemetery		
25	Helmsley Avenue	86	Ochre Dike Lane Playing Field		
26	Handsworth Community Park	87	Bowman Drive		
27	Woodhouse Washlands LNR	88	Heathlands Estate		
28	Handsworth Cemetery	89	Owlthorpe Lane		
29	Springwell Park	90	Westland Road		
30	Rainbow Avenue	91	Lister Crescent		
31	Jaunty Park	92	Reignhead Farm Allotments		
32	Rolling Acres	93	Junction Road		
33	Revill Lane Open Space	94	Auckland Way		
34	Stradbroke Road	95	Beighton Miners Welfare		
35	Station Road Woodland	96	Basgreen Road		
36	Occupation Lane Open Space	97	Holbrook East of railway		
37	Rotherham Road North	98	Junction Road Allotments		
38	Colesley Hill East	99	Beaver Drive		
39	Ochre Dyke	100	High Street Open Space		
40	Birley Moor Drive Allotments	101	Carr Forge Road		
41	Dyke Vale Open Space	102	Fox Lane Playing Fields		
42	Batesquie	103	Moor Crescent Allotments		
43	Bowden Housteads Wood South	104	Elm Crescent Allotments		
44	Plumley Lane Allotments	105	Westfield School		
45	Hayfield Crescent	106	Westfield Southway Open Space		
46	Rainbow Park	107	Carley Drive		
47	Carter Lodge Avenue	108	Cardwell Drive Open Space		
48	Meeting House Lane Allotments	109	Ochre Dike Lane		
49	Lamb Croft Municipal Allotments	110	Farm Fields Close		
50	Hayes Drive	111	East Park Fields		
51	Wickfield Heath and Plantation	112	Woodhouse Cemetery		
52	Kew Crescent	113	Silkstone Close		
53	Hollow Lane Open Space	114	Tannery Street		
54	South View Allotments	115	Westfield Northway		
55	John Hibbard Avenue	116	Holbrook Marsh		
56	Grange Road Open Space	117	Jaunty Place		
57	Waterslacks Road Open Space	118	Birley Spa House		
58	Carter Lodge Drive	119	Hackenthorpe Village Green		
59	Thornbridge Rise	120	Beighton Marsh		
60	Hazelbadge Crescent	121	Church Lane		
61	Finchwell Road Allotments	122	Soaphouse Lane Allotments		



# Ecological rich spaces

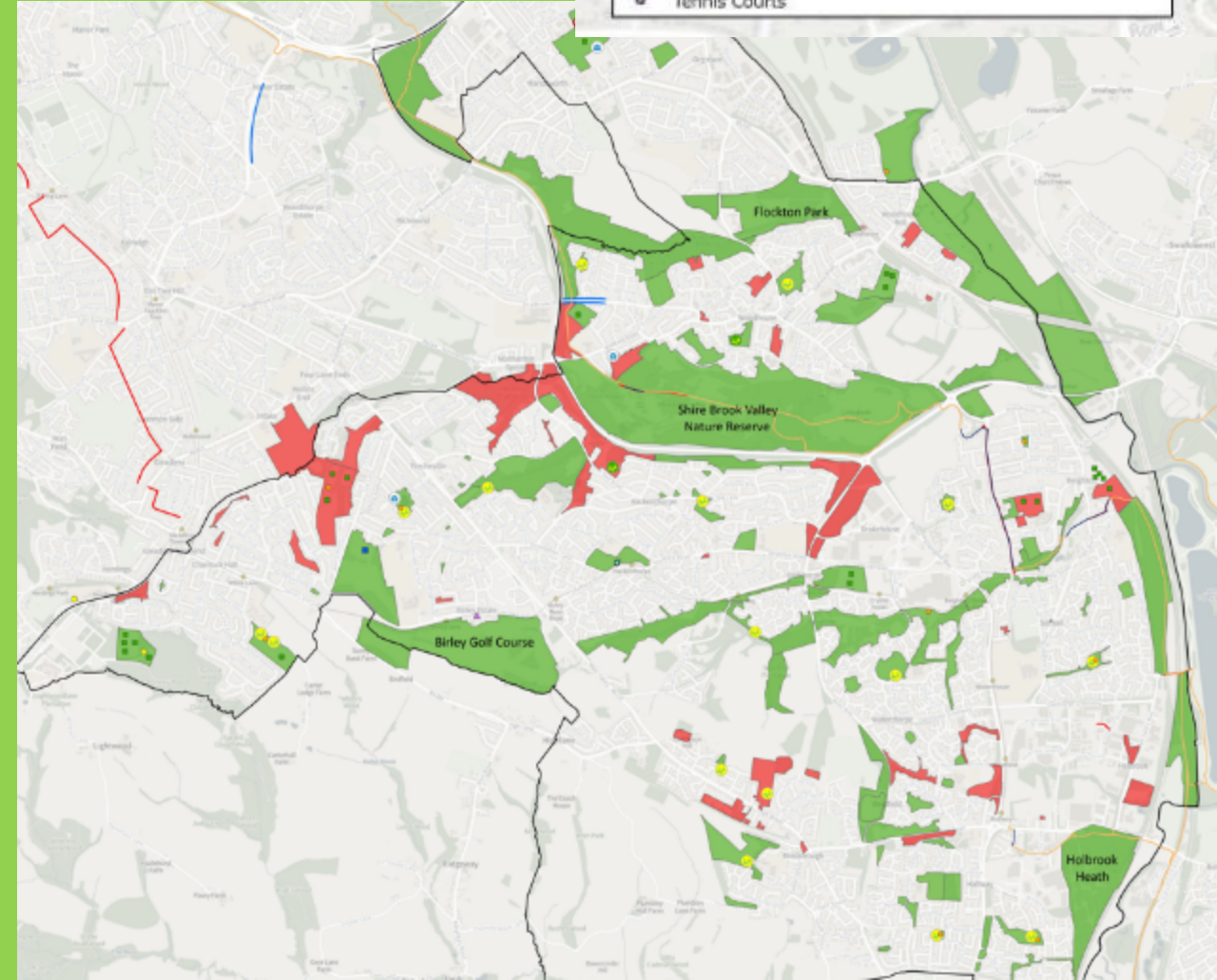
- Sheffield Standard Sites
- Local Wildlife Sites
- Sites of Special Scientific Interest (England) © Natural England
- Local Nature Reserves (England) © Natural England



Page 6

# Recreational Facilities

- Sheffield Standard Sites
- Pass
- Fail
- Bike Track
- Bowling Greens
- Climbing Boulders
- Football Pitches
- MUGA (Multi Use Games Area)
- Tennis Courts
- Skate Park
- Parks Playgrounds
- Green Flag Site
- Cycle Lane
- Official Cycle Lane
- TrafficFree
- On Road
- Cafe
- Playground
- Pavilion



# Green Space Ecological Improvements

- Funding for **SCCT's** work with volunteers: access and infrastructure, meadow management, encroaching vegetation and litter clearance
- Working along the S20 corridor with £20k of CIL over the past few years (with the South East Environment Group)
- Community Forestry have hedge planting planned at Linley Bank
- A **Landscape and Ecological Management Plan** for the **Owlthorpe Development site** (associated with the Biodiversity Net Gain BNG) is well progressed. This will require agreement on where the overall land management of this site sits in order for the BNG monies to be spent.
- Delivering a small NLHF bid (30-40K) for part of the former **Owlthorpe** Higher Level Stewardship area.
- Ongoing educational activities delivered by the Rangers (funded by the LAC)
- Community Forestry events and activities on the **Owlthorpe and Beighton Orchards** (funded by the LAC). Will the Beighton Orchard management continue to be funded by the LAC (as it's not a P&C site)



# Volunteering P&C led activities

## April – September 2023

- Engaged with 186 volunteers
- Total volunteering hours 733

## Across various sites including:

- Shire Brook Valley
- Holbrook Marsh
- Shirtclife Wood
- Waterthorpe Park
- Birley Stone
- Birley Spa Woods

## Activities undertaken:

- clearance and cutting back
- path maintenance
- tree maintenance mulching
- planting
- litter removal
- education sessions
- meadow management





# Allotments in the South East

- 14 sites totalling 402 plots
- 21 are currently deemed unlettable. Usually due to either historic fly tip or overgrown that make it at present uneconomical to bring back to a lettable condition.
- Waiting list across the SE is currently at 161

Page 9

## Allotment Issues

- Victoria Rd and fly-tipping removal costs £15,000. Bringing unlettable plots up to standard is a challenge
- Mossway – scale of issue will require skips for clearance of waste. Bringing unlettable plots up to standard is a challenge (and other sites such as Lambcroft)
- Elm Crescent needs an accessible water supply





Cardwell Park



Recent Improvements



Frecheville Pond



Shire Brook Valley

# Wider Improvements

**Westfield Park** new playground delivered in 2021.  
Next priority – the Castle...



**Hollinsend Park** Tennis Re-provision  
and Play upgrade

# Green Space Improvements coming soon...

## Thorpe Green

Following community consultation, toddler play improved and safety surfacing replaced to be delivered for the playground. There is £34k available (Public Health funding & Waterthorpe TARA contribution)

## Heathlands Park

The Friends Group's priorities for spending the £180k Section 106 available for the park. Consultation has identified a list of the community's improvement ideas. Next step is to develop designs & costs. Delivery in 24/25 financial year.

## Handsworth Recreation Ground

Working with Friends of Handsworth Park. Consultation has identified priorities. There is £60k Section 106 funding. Goals: improving toddler play, boundary improvements, games area improvements. These are being designed up and works will be carried out in Spring 2024.

## Owlthorpe New Playground

As part of the Owlthorpe housing development a new playground is to be installed by the developer before the completion of the housing.

## Handsworth



## Thorpe Green

# South East LAC Green Spaces – future projects and priorities

## Green Space Improvements in planning

### Future Priorities:

- **Improving site quality** – Sheffield Standard & Green Flag
- **Recreational & Community Facilities renewal:** Shirebrook Valley – potential Green Flag site, High St Open Space play & site quality improvements, Ecological and access improvements, Castle site MUGA area improvement.
- **Making sites more accessible and Inclusive** – playgrounds renewal – choice of inclusive equipment.
- **Making sites better for wildlife by improving natural habitats** (woodlands, wildflower meadows etc.).
  - **Habitat and accessibility improvements at naturalistic spaces across the South East**
  - **Species Survival Bid: Shire Brook Valley landscape** (landscape scale) funding bid to deliver nature recovery across multiple locations including Shire Brook Valley Nature Reserve, Beighton Marsh, Woodhouse Washlands, Wickfield Heath & Plantation, Richmond Park and Silkstone Ravine (part of Birley Spa).



**Improving the accessibility of play**



**Trial autumn cut meadow strips**

Thank you  
Any Questions?